

POLE  
P613502

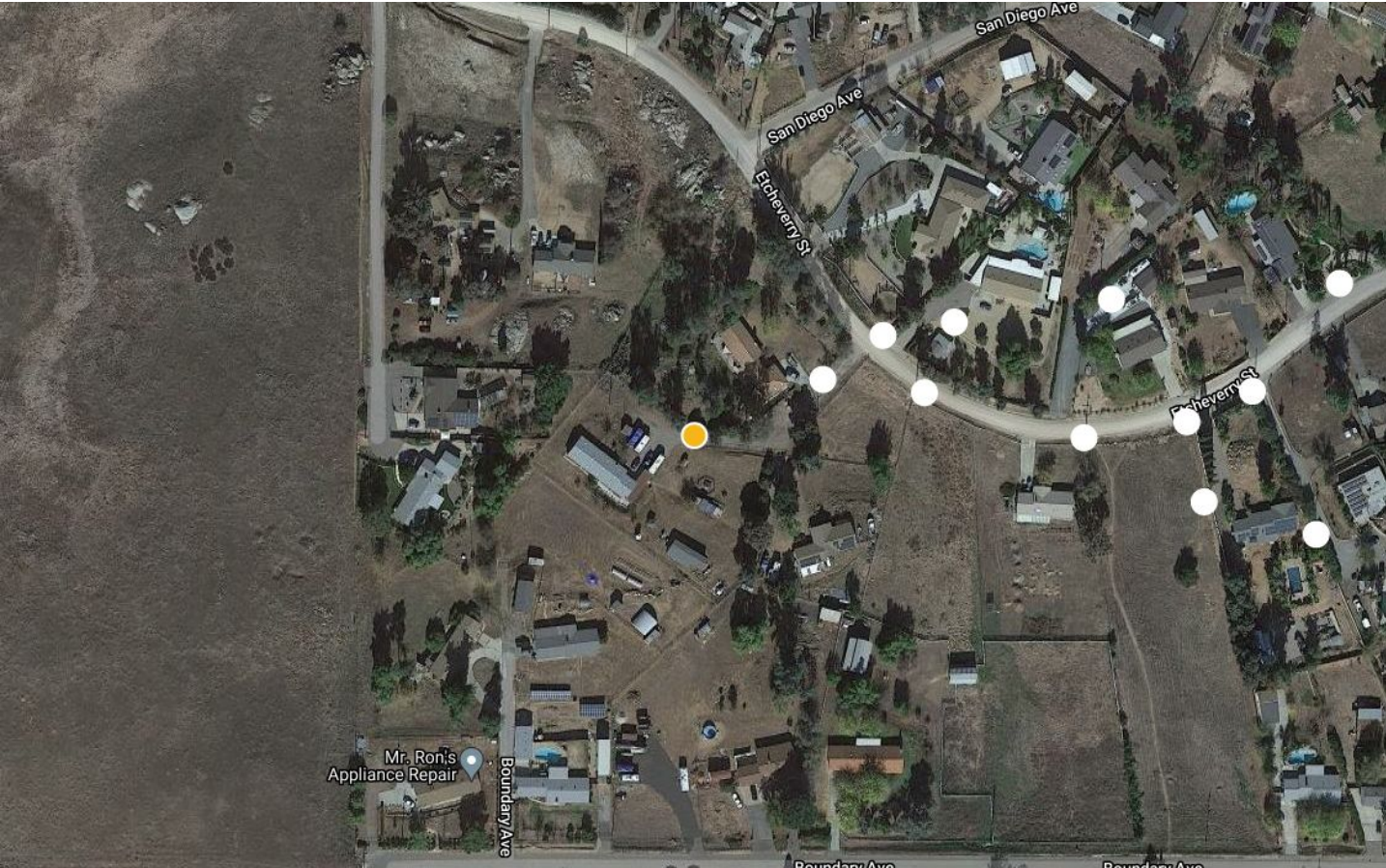
APPROVED  
21 Dec 2021

VIEW ORDER

VIEW ASSET

LOCATION

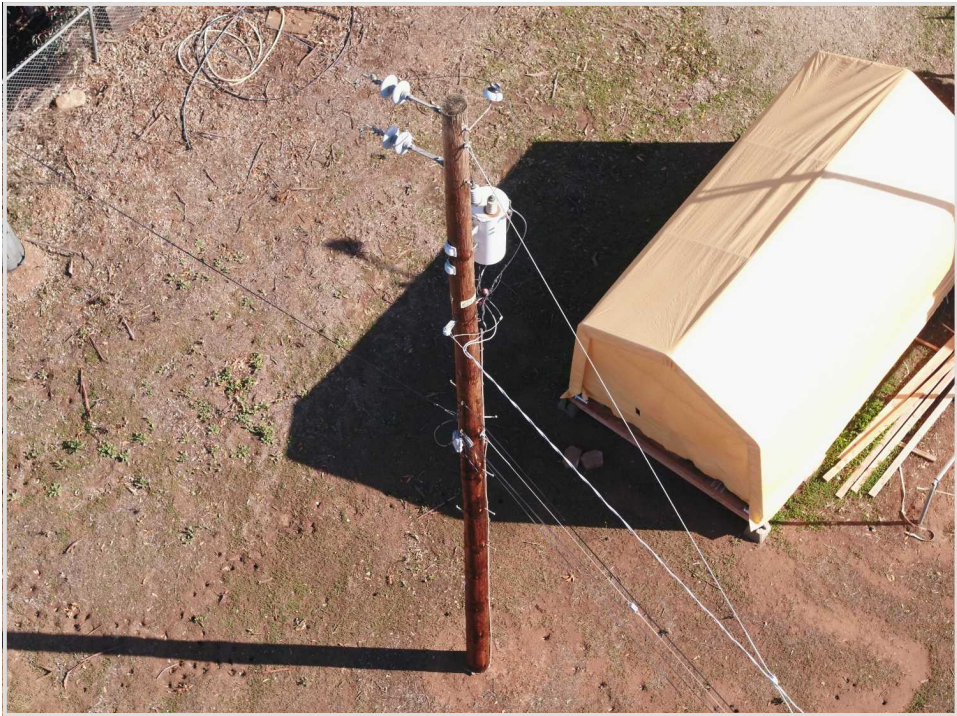
Latitude	33.0201920231	Longitude	-116.8911713235
----------	---------------	-----------	-----------------



ATTRIBUTES

Area	972
Material	WOOD

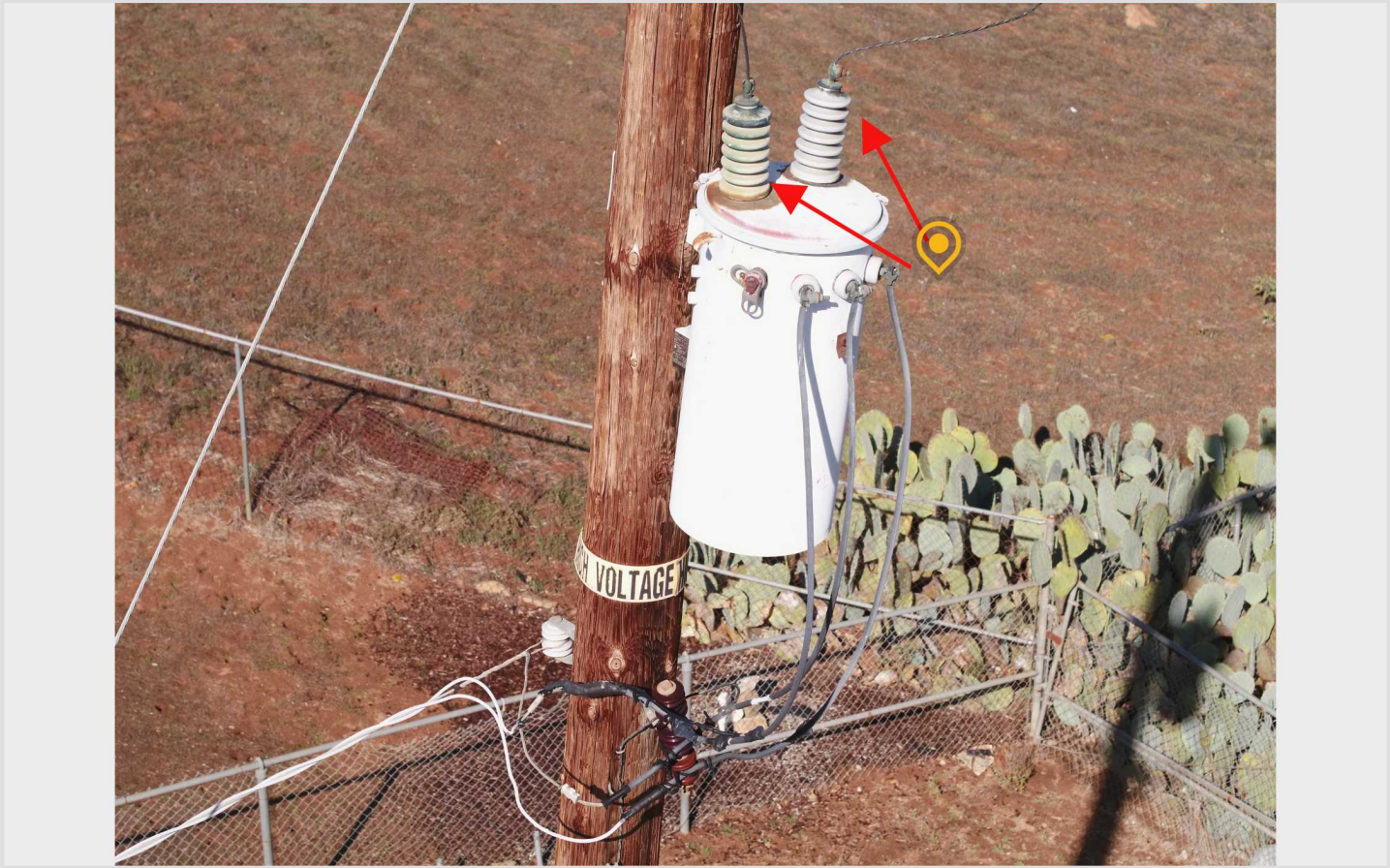
STRUCTURE





P613502

235 Damaged Arrestor/Insulator/Dead-End



DETAILS

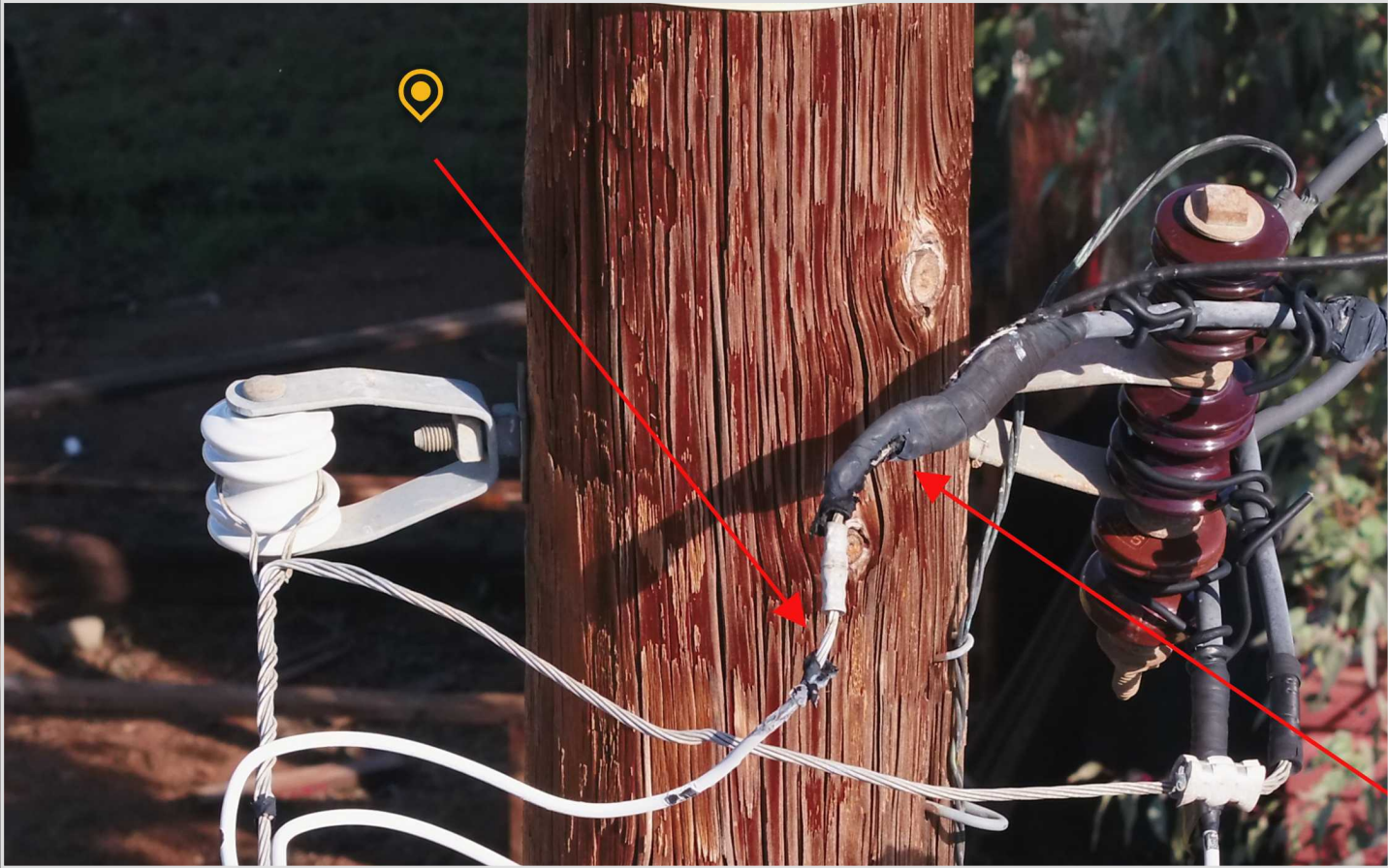
Priority	Priority	Inspector	jnay@hilination.net
Date	15 Dec 2021	Party To Advise	Engineering team

DESCRIPTION

Damaged transformer bushings

P613502

264 Bare or Wrapped Service



DETAILS

Priority	Priority
Date	15 Dec 2021

Inspector	jnay@hilination.net
Party To Advise	Electrical Regional Operations

DESCRIPTION

Uncovered connection and insulation on wire has melted



P613502

206 Damaged/Missing Pole Hardware



DETAILS

Priority	Non-critical	Inspector	jnay@hilinenation.net
Date	15 Dec 2021	Party To Advise	Electrical Regional Operations

DESCRIPTION

Loose lag